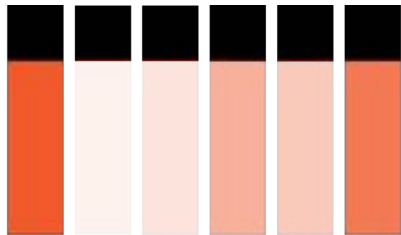


MUTOH FLATBED UV-LED PRINTER

XpertJet 461 UF



Powered by MUTOH's genuine VerteLith RIP Software
bundled with FlexiDESIGNER MUTOH Edition 21
a \$2,199.00 value



LDC
UV LED LOCAL DIMMING CONTROL

The XpertJet 461UF, compact UV-LED flatbed printer offers many features including a larger printable surface area, a larger window for safe viewing, an updated touchscreen panel, an improved LED lamp, optional vacuum table providing the ability for increased printing depth and more. The XPJ-461UF is powered by MUTOH's new genuine VerteLith™ RIP software, bundled with FlexiDESIGNER MUTOH Edition 21, a \$2,199.00 value. VerteLith RIP optimizes all of the capabilities of the XPJ-461UF, increasing productivity and profitability. The XPJ-461UF allows for finer texture layers which instantly adds value to any print. Tie that in with MUTOH's Local Dimming Control Technology, you now have the ability to add high glossy finishes easily in one pass.



GLOSSY & MATTE VARNISH



RICH TEXTURES



VARIABLE PRINTING



BRILLE

MUTOH

LDC

UV LED LOCAL DIMMING CONTROL

UV-LED Lamp
Local Dimming
Control Technology

Upgraded LED
Touch Panel

Optional
Vacuum Table

Removable Table

Expanded
Opening Space

1-800-99MUTOH
www.MUTOH.com



LED Touch Panel

LED touch panel provides high quality display and improves panel operation.

Print Resume Function

Ability to pause and resume print function.

Partial Nozzle Block Activation

Printing can be performed temporarily using only active nozzle blocks if nozzles are clogged.

Powered by VerteLith™

MUTOH'S GENUINE RIP SOFTWARE BUNDLED WITH FLEXIDESIGNER MUTOH EDITION 21

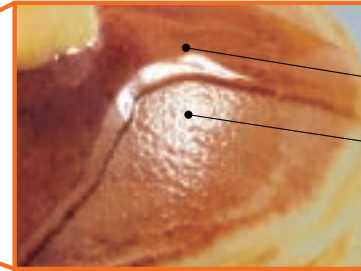
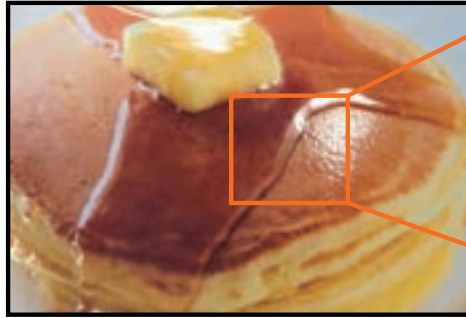


Mutoh's Unique UV-LED Lamp Local Dimming Control Technology

The LED-UV lamp Local Dimming Control technology produces various rich texture expression. It provides glossy, semi-glossy, and matte varnish printing simultaneously with colors and/or white printing with a single table movement.

LDC shortens print time, improves productivity, reduces grain, banding and layer printing misalignment.

UV-LED Lamp Local Dimming Control Technology



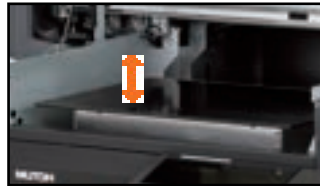
Glossy Varnish

Matte Varnish

Even if varnish is simultaneously printed with colors and/or white with single table movement, glossy and matte varnish can be expressed.

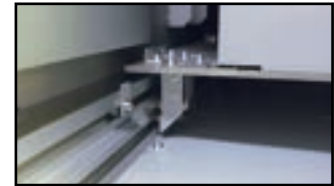
Newly Designed Mechanism Ensures Excellent User Experience

TABLE MECHANISM FOR USER FRIENDLINESS



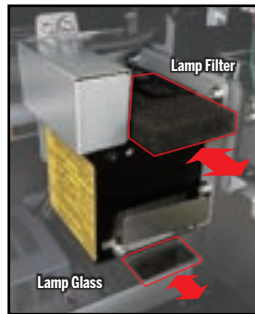
Print onto objects up to 2.76" thick. Table removal allows printing onto objects up to 5.91" thick. Optional vacuum table available.

PRECISE RAIL MECHANISM



High precision rails on both sides keep the table horizontal and provide consistent print quality.

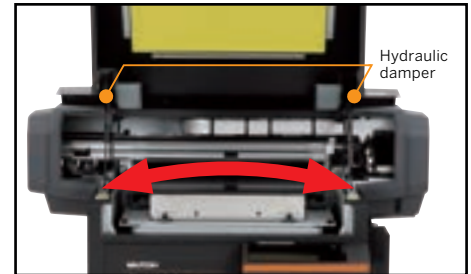
Improved Maintenance



Redesigned area around UV-LED Lamp makes for easier access for maintenance.

New removable/replaceable UV lamp filter makes for easier cleaning.

EXPANDED OPENING SPACE



Newly designed front cover with hydraulic damper ensures safety and improves ease of operation. Expanded opening space for ease of use and maintenance.

XPERTJET 461UF SPECIFICATIONS

Printing Systems		On-demand piezo drive system	Print Resolution	1440 / 1080 / 720 dpi (Total 6 modes)
Set Media	Size (WxD)	20.5 in x 14.9 in	Interface	Ethernet (10BASE-T / 100 BASE-TX)
	Height	up to 2.76 in (with standard table) up to 5.9 in (w/o standard table)	Power Requirements	AC 100-120V± 10%, 50/60Hz ± 1Hz
		up to 2.76 in (with optional vacuum table)	Operation Noise	Standby: 51dB or less Printing with standard table: 63dB or less
	Weight	up to 11.02 lbs. (w/standard table) up to 17.64 lbs. (w/o standard table)		Printing with optional vacuum table: 70dB or less
		up to 8.82 lbs. (with optional vacuum table)	Printable Environment	Temperature: 68-89.6 °F Humidity: 40-60%RH (non condensing)
Max Printable Size (WxD)		19.02 in x 12.95 in	Power Consumption	Sleep Mode: 20W or less Ready to Print: 40W or less Operation: 195W or less
Height Adjustment		PG handle	Dimensions (WxDxH) Weight	46.77 in x 38.27 in x 23.50 in (cover closed) weight: 209.44 lbs.
Ink	Type	UV-LED Ink (UH21 ink / US 11 ink)		46.77 in x 38.27 in x 39.80 in (front cover opened)
	Ink Set	4 colors (C, M, Y, K) 6 colors (C, M, Y, K, White, Varnish)		46.77x 40.35x 23.50 in (PG handle cover opened)
	Capacity	220ml ink cartridge (CMYK, White, Varnish)	Printer Driver	Bundled
	No. of slots	6	RIP Software	VerteLith™, bundled with FlexiDESIGNER MUTOH Edition 21, a \$2,199.00 value
Vacuum Table		Optional		