

DRYLAM[®]
Preserve and protect what matters.

FUJiPLA

HLA-2301 AUTOMATIC LAMINATOR

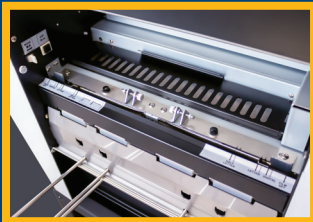
High-Speed, Commercial-Grade, Fujipla Laminator!

The newest, commercial-grade Fujipla laminator by Dry-Lam has everything you know and love about the previous ALM line for automatic feeding, laminating, trimming, and stacking sheets, but is now faster and better with improved features and functionality! Laminating up to 68" per minute, it is 25% faster than the ALM3230.

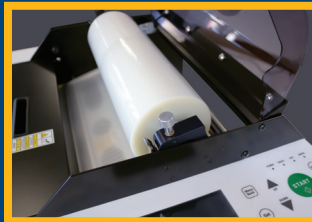


Width: 13"

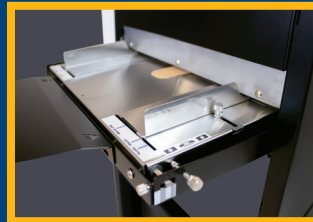
New & Improved!



Simple-slide paper
size adjustment



Improved film roll
installation



Upgraded multi-
thickness feed tray



Easy-to-use Color
Screen & Controls

Recommended Film*

- ▶ DL-HLA38GLOSS 1.5 mil Gloss
- ▶ DL-HLA75GLOSS 3.0 mil Gloss
- ▶ DL-HLA75MATT 3.0 mil Matte
- ▶ DL-HLA125GLOSS 5.0 mil Gloss

*Additional options available.
Contact sales for more info.



FEATURES

- ▶ **Zero waste mode** for reduced film scraps on border-cut sheets
- ▶ **Joint mode** with gap or no gap, for folded applications or multi-sheet prints
- ▶ **Ultra-quick warm-up** time of less than 5 minutes
- ▶ Automatic **single or double-sided** lamination
- ▶ **2 Automatic trim** options
 - Flush-cut: precise, micro-adjustable with ± 5 mm margin adjust
 - Border-cut: custom-sealed options with 4-sided trim uniformity
- ▶ Hands-free, **automatic feed** tray
- ▶ Includes **stand with waste basket** to collect scraps
- ▶ Simple operation with **specially encoded film** for auto settings

NEW “EVERSTICK” FILM ROLLS

- ▶ **New and improved** HLA film designed for optimal operation of the HLA-2301*
- ▶ **Strong adhesion** with no peeling or bubbling, even on flush-cut sheets
- ▶ Proprietary **chip-reading** design
- ▶ **Automatically sets** to the correct temperature for the film in use

*Former ALM SAP film rolls are not compatible with the HLA-2301

| | |
|-----------------------------|---|
| Model | HLA-2301 |
| Laminating Width | 12.6” |
| Speed | 84” per minute |
| Film Thickness | 1.5 - 10 mil film (10 mil single-side only) |
| Paper Thickness | 17lb - 100lb cover |
| Laminating Thickness | 16 mil |
| Heat Type | Heated Rollers |
| Temperature Range | 170 - 270°F |
| Warm-up Time | Less than 5 minutes |
| Paper Sizes | 8.5”x5.5”, 8.5”x11”, 11”x17”, 12”x18”, 13”x19” |
| Paper Feed Capacity | 200 Sheets |
| Trimming Methods | Flush cut or Border cut; Double cut, Single cut modes |
| Operation Panel | Color LCD Display |
| Power Supply | 100-240 VAC, 50-60Hz |
| Dimensions (LxWxH) | 48” x 23.5” x 44” |
| Weight | Laminator: 163 lbs |