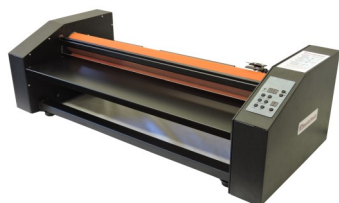
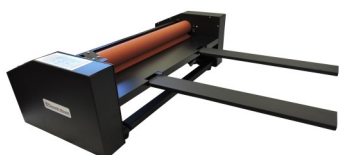


Smooth Mount LAMINATORS

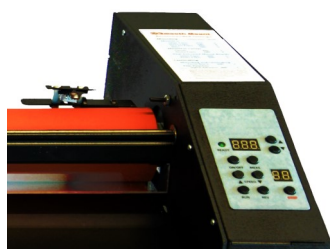
27"/40"/50" Pouch Board Laminators



Automatic Silicon Rollers



Rear Extension Legs



Digital Controls

Simply Superior Design

For improved productivity and ease of use

- **Rear Table Extension Legs improve results and productivity**

Boards exit unattended and safely cool flat (Patent applied for)
Attaches securely in seconds without tools
Stores under laminator to save space when not in use

- **Variable Temperature and Speed**

Use with all pouch boards, mounting as well as cold boards
Reference Guide on laminator for common applications
Speed from one to five feet per minute
Temperature from cold to 300 degrees

- **Spring controlled roller automatically adjusts to board thickness**

Works with boards up to 1/4" thick
Roller is silicon coated for easier cleaning

- **Digital Controls and Sensor**

Touchless infrared sensor monitors roll surface temperature
Digital display for both set and actual temperature

- **Safety Features**

Clear Safety Shield lets you view your work being processed
Fuses and adjustments accessed on the surface of the laminator

- **Uses standard 110V AC power**



Finished Board on Extensions



Videos

Specifications	27" Model	40" Model	50" Model
Dimensions	35"x15"x10"	48"x15"x10"	58"x15"x10"
Weight (net)	65 pounds	80 pounds	140 pounds
(shipping)	70 pounds	125 pounds	200 pounds
Roller Width	28" wide	41" wide	51" wide
Roller Diameter	2.5"	2.5"	3"
Power Requirement	110V / 12amp	110V / 12 amp	110V / 17 amp
Ships Via	UPS/Fedex	Truck	Truck
Item Number	PBML2725	PBML4025	PBML5030

Easy to Use



*Place print in MountCor Board,
Pouch Board or Film Sheets*



*Insert board into the
Smooth Mount Laminator*



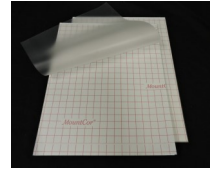
*Print exits the Laminator
Finished and ready to display*

Smooth Mount and *MountCor® Boards*

Fast, professional results everytime

Choose MountCor Boards for your demanding jobs

- **Smooth Results** MountCor's breathable surface insures bubble-free mounts every time
- **Fast** At 275°F, Mountcor adheres at a fast 5 feet per minute
- **Professional** MountCor's denser core resists bowing and cuts cleanly
- **Available** Mountcor is available in both mount boards or pouch boards
- **Canvas** Mountcor Canvas is the only heat adhesive to permanently bond canvas prints
- **Versatile** MountCor adheres to more prints than standard heat-activated adhesives



MountCor Features

- High density 3/16" thick rigid foam board
- Every board has its own non-stick cover sheet
- MountCor works at safe, low temperatures
- Adhesive is acid free and pH neutral



	White MountCor	Black MountCor	MountCor Canvas
Size			
24"x 36"	940009-MC	940009-BLK	940009-CAN
32"x 40"	940000-MC	940000-BLK	_____
40"x 60"	940006-MC	940006-BLK	940006-CAN
48"x 96"	940038-MC	940038-BLK	_____



White MountCor Pouch Boards (10/box)

Size	Gloss	Crystal Matte	Smooth Matte
18.5" x 25"	C18W-MC	M18W-MC	62318LMC
25" x 37"	C25W-MC	M25W-MC	62310LMC
36" x 48"	C36W-MC	M36W-MC	62311LMC
40" x 60"	C40W-MC	M40W-MC	62312LMC



Video

Smooth Mount and MountCor Return on Investment

The Market prices for Mounting and Laminating

Encapsulating (2 sided laminating)	\$4/square foot
Mounting (white foam board)	\$5/square foot
Mounting and Laminating (Foam Board/Gloss)	\$7/square foot

Note: Black foam board and matte laminate have higher prices

Prices based on Northeast pricing

Prices are round and based on single item purchases

The average pricing mark-up is 4 times material cost



The Payback Calculation

1. **Assume you sell 1 24"x36" print a day** at \$30 each.
Total revenue \$150/week with a cost of supplies & labor is \$40
Yielding a weekly profit of \$110
2. If your equipment cost is \$2,000 you will get your money back or
Payback in 18 weeks (\$2,000/\$110) or less than 100 mounts
pays for your system.

