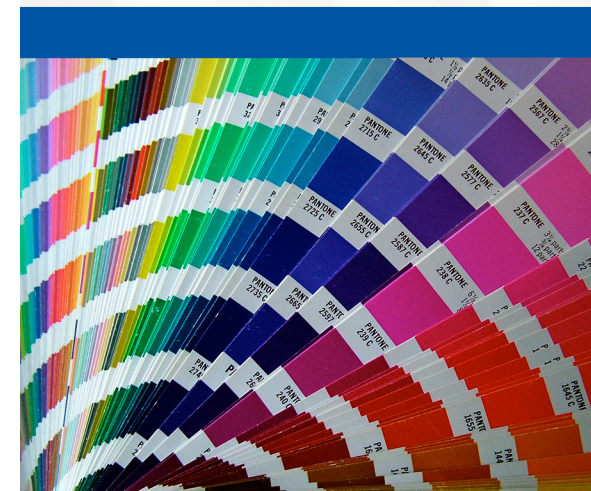


Specifications		
Performance Print Speed	CMYK/Mono	Up to 500 Com 10 envelopes in under 12 minutes; 50 ppm Letter-size sheets, 27 ppm Tabloid sheets
Duty Cycle	Printers	300,000 pages max per month
Print Quality	Resolution	Up to 1200 x 1200 dpi; ProQ 1200 x 600 x 16 levels
Memory	RAM (Standard/Max)	2 GB
	Processor	1.2 GHz ARM CPU
Compatibility	Printer Languages	Adobe® PostScript 3™, PCL® 6, PCL 5c, XPS®
	Connectivity	High-speed USB 2.0, 10 Base-T/100 Base-TX/1000 Base-T Ethernet
	Operating Systems	Windows® 8, Windows 7, Windows Vista®, Windows XP, Windows Server 2012, Windows Server 2008, Windows Server 2008 R2, Windows Server 2003; Mac® OS 10.3.9 – 10.9
	Network Protocols	TCP/IP, EtherTalk
Color Features/Solutions	Standard	PostScript® driver supports trapping; Embedded ICC Profile-based workflow; Simulations for SWOP, ISO Coated, Japan Color; PDF Direct Print; PS Gamma Adjust; and Color Correct
	Optional	External PC-based RIP: Global Graphics® Harlequin® DirectPrint RIP or Fiery® C9 Server with Command WorkStation® from EFI®
Media Handling	Media Sizes	Envelope Feeder: A2, A6, A7, A8, A9, A10, Invitation, Com-9, Com-10, Monarch, 6x9, 7x9, 9x12, 10x13, 10x15; Custom size range: 2.5" x 4.5" to 13" x 15" Paper Trays: Tabloid extra (12" x 18"), Tabloid (11" x 17"), Legal, Letter, Executive, 3" x 5" Index cards
	Media Weight	Trays 1 & 2 and optional High-Capacity Feeder: 52–320gsm; Multi-purpose Tray/Feeder: 80–360gsm
Media Capacity	Multi-purpose Tray/Feeder	Up to 600 Com-10 envelopes
	Trays 1 & 2	Up to 530 sheets each
	High-Capacity Feeder (Optional)	Up to 1,590 sheets (3 trays, 530 sheets each)
Media Output	Face Down	Max 610 sheets
	Face Up	500 envelopes via Stacking Conveyor
Environmental	Size (WxDxH)	Printer: 27.5" x 24.6" x 25.2" (699 mm x 625 mm x 640 mm) Printer/Feeder/Conveyor: 103.5" x 24.6" x 48.6" (2629mm x 625mm x 1234mm)
	Weight	(Printer): 215.2 lb. (97.6 kg) including consumables Feeder: 86.4 lb. (39.2 kg); Conveyor: 60.6 lb. (27.5 kg)
	Temperature/Humidity	50° – 90° F (10° – 32° C) / 20% – 80%RH
	Power Consumption	Printer: Active 1600W max. /1100W avg.; Standby avg. 40W; PowerSave mode 30W or less; Sleep mode 4W or less; Auto Shutoff 0.4W or less. Feeder/Conveyor: 180W max.
	Noise Levels	Printer: Active 57dBA or less; Standby 34dBA or less; PowerSave mode – Inaudible
Warranty	Limited	1 Year Limited Warranty

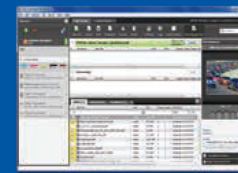


MP200





Two RIP options allow the MP200 the flexibility to fit into any print workflow.



EFI® Fiery® C9 Server, designed specifically for MP200 devices, offers fast, precise color reproduction and flexible job management. Featuring the Fiery Command

WorkStation™ for administrator-managed workflows that are ideal for supporting a team of users that desires consistent results. The C9 Server includes EFI's spot color adjustment tools and hot folder job submission.



Harlequin® MultiRIP™ 10 from Global Graphics® is combined with Harlequin's DirectPrint™ to offer incredible job processing power and ease of use.

See complex jobs rendered quickly and printed with consistent results. DirectPrint's PDF centric workflow simplifies job submission and setup. Built-in Harlequin Dispersed Screening (HDS) produces sharp details and highfidelity color transitions

MP200 Highlights:

- Print speed up to 50 ppm Color and Mono
- Microfine toner engineered for sharpness and crispness, with a high-quality finish
- True 1200 x 1200 dpi resolution
- High-capacity toner: up to 38,000 pages
- Prints on a wide range of media, including envelopes, magnetic media, polyester, transparent film, and heavy stock up to 360 gsm
- Handles 3" x 5" cards to 52" banners
- Supports tabloid extra (12" x 18") and Super-B (13" x 19")
- 2 GB memory, 1 Gigabit network and duplex (2-sided printing) standard
- Easy front access to toner cartridges and image drums
- High-resolution color LCD display panel with alphanumeric keypad
- Low total cost of ownership (TCO)
- Paper capacity expandable to 2,950 sheets
- 1 Year Limited Warranty

1 The newly designed MP200 Envelope Feeder simplifies job setup while delivering both high levels of production and reliability. It feeds the broadest range of envelope sizes from A2 to 13" x 15". The straight through print path handles envelopes and ultra heavy card stocks (up to 360 gsm) with ease.

2 Optional 2nd tray and high-capacity feeder (with casters) increase paper capacity to 2,950 sheets max.

3 The ability to run up to 360 gsm media ensures the MP200's flexibility of handling a wide array of printing applications, from envelopes, double-sided brochures, to business cards and more. The MP200 is the industry leader in short run work with its fast print speed and stunning color quality and depth.

4 The MP200 auto sequencing Delivery Conveyor allows for unattended operation while printing the most complex print jobs.

The MP200 is a professional-quality device that creative, opportunity seeking Print Production Houses, Design Firms and Specialty Print Shops have been looking for: it's fast, affordable and easy to use with a media flexibility unmatched by ordinary color printers.

High-definition color is the standard for the MP200. HD Color renders deeper, more saturated colors, finer detail and more precise toner placement than ordinary color printers:

- Multilevel LED printheads control the amount of toner applied to each 1200-dpi dot, preserving fine image detail and maximizing color fidelity
- Microfine toner engineered for sharpness and crispness, with a high-quality finish
- Single Pass Color™ technology improves color registration for all paper types and weights
- Printer control system adjusts for sharp, clear images every time

The MP200 lets you extend your inhouse printing and presentation capabilities from the expected to the extraordinary. This affordable printing device, with its ease of use and low total cost of ownership, enables you to produce stunning documents, offer new services, be competitive, and grow your business.

Users can get an instant read on the MP200's status via the color LCD display, with its easy-to-read messaging and graphics. The alphanumeric keypad makes entering commands a snap. And the front-accessible compartment makes replacing consumables quick and easy: it takes seconds to switch out used toner cartridges or image drums.

